

# APWA / SAME CIP Update

September 30, 2024

**Bob Patton**

**Vice President, Board of Directors**

# Existing System

## Bellaire Pump Station

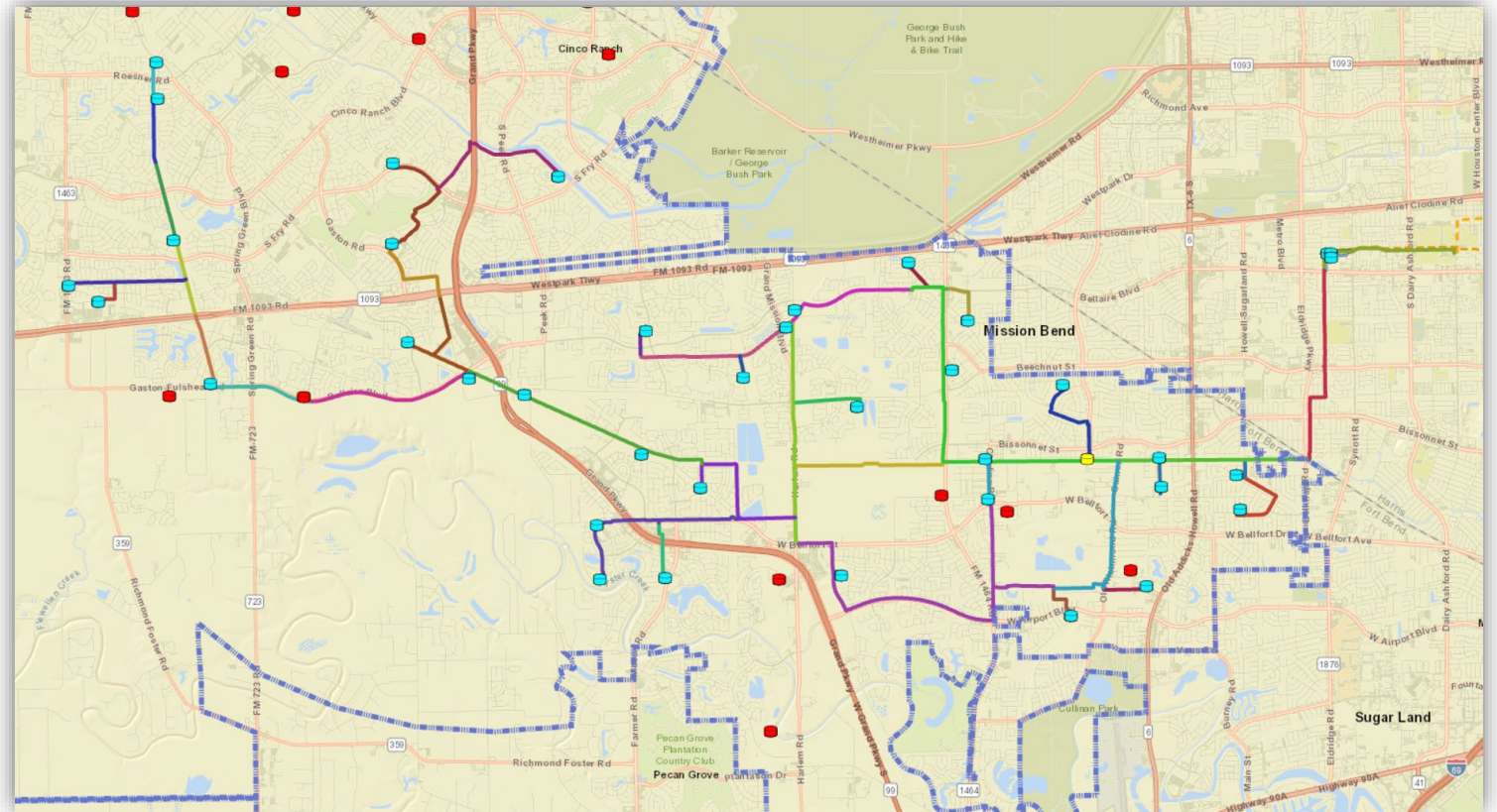
- 40 MGD
- 15 MG of ground storage

## Transmission System

- Over 50 miles of water line
- 12” – 48”
- 35 delivery points to 39 MUDs

## Reclaimed Water Systems

- 10 systems (2 owned by NFBWA)



# Under Construction

## FBC FWSD 2 Connections

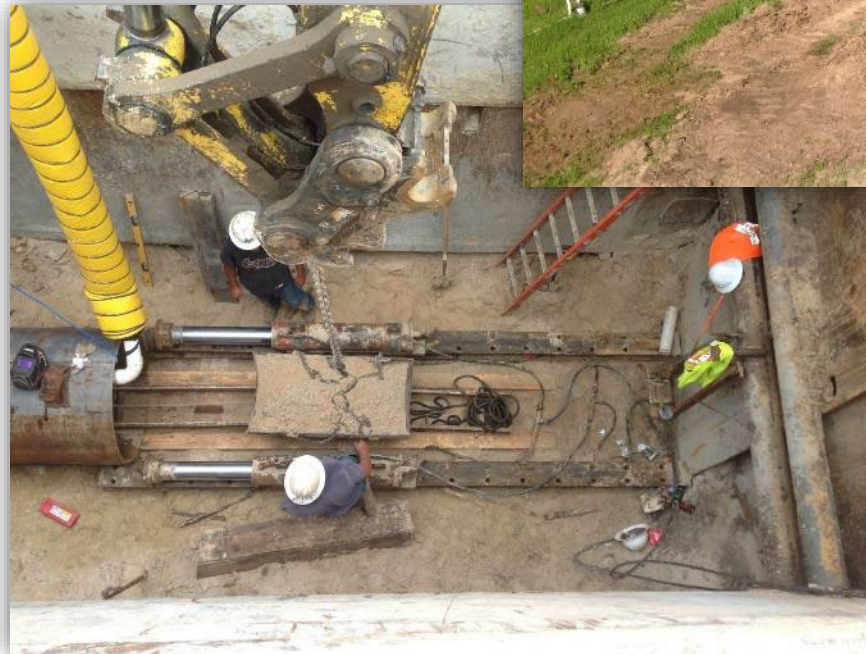
- 2,400 LF of 12"
- Trenchless crossing under Clodine Rd. and W. Belfort Blvd.

## Segment 11A

- 8,600 LF of 36"
- Trenchless crossing under Willow Fork (Buffalo Bayou) and Cinco Ranch Blvd.

## FBC MUD 255 Connection

- 1,900 LF of 12"





## Shovel Ready (or Close)

### Segment 13B

- 10,400 LF of 16"

### Segment 13C, Phase I


- 3,400 LF of 12" and 30"

### Segment 18A

- 11,300 LF of 42" and 60"

### Segment 19


- 6,600 LF of 60"



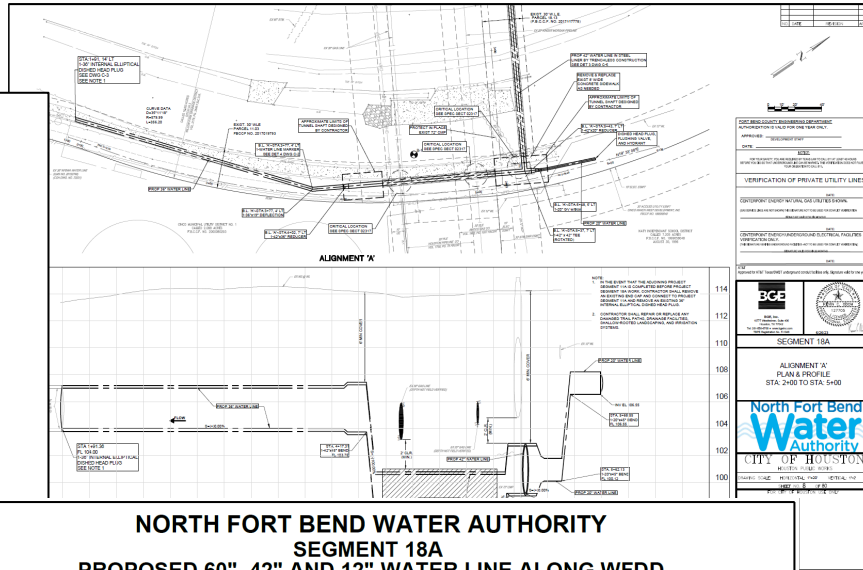
**NORTH FORT BEND WATER AUTHORITY**

**PROGRAM CRITERIA MANUAL**

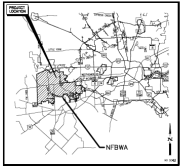


Prepared by



December 2020



**NORTH FORT BEND WATER AUTHORITY**  
**SEGMENT 18A**  
**PROPOSED 60", 42" AND 12" WATER LINE ALONG WFDD**  
**FROM CINCO MUD NO. 1 WATER PLANT TO H-FBCMUD 5 WATER PLANT**

DIRECTORS	PRECINCT
BRUCE FAY	1
ROBERT GARDEN	2
DONALD ABRAMSONGIL II	3
RODOLFO S. RUIZ, P.E.	4
ROBERT FATTON	5
PETER HODGSON	6
DANA HOLLINGSWORTH	7

MARCH 2023

LINE NO 220406

REV G-1

# In Design

## Segment 17A

- 8,700 LF of 48"

## Segment 17C

- 1,600 LF of 12"

## Segment 18B

- 4,000 LF of 16"

## Bellaire Pump Station Phase II

- Additional GST, SWSP connection, disinfection improvements

# On Tap

## Segment 13E

- 12,300 LF of 16" and 24"

## Segment 14A

- 10,800 LF of 24"

## Segments 15A & B

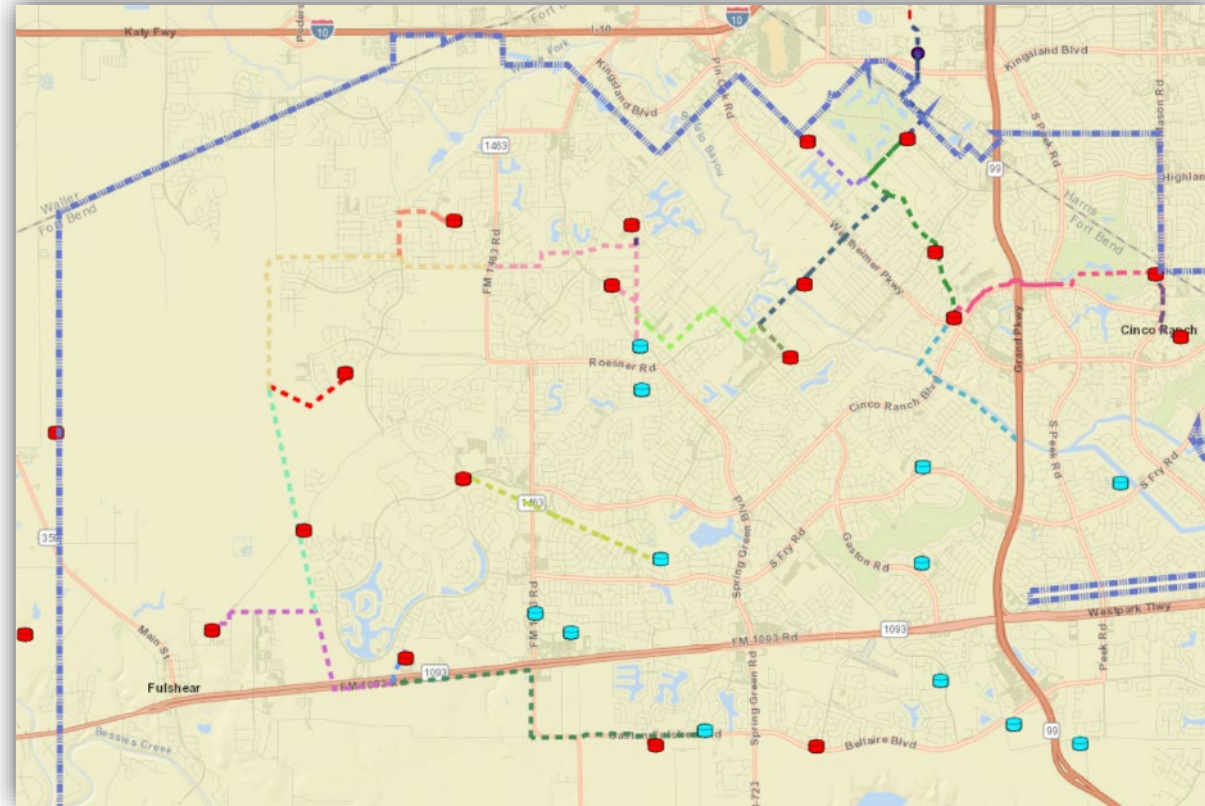
- 21,900 LF of 20" and 36"

## Segments 16B & C

- 14,800 LF of 12", 36" and 42"

## Segments 17B

- 18,800 LF of 12" and 48"





**Provide. Conserve. Educate.**

[www.nfbwa.com](http://www.nfbwa.com)