

Category 2		Low Bid	
30-Year Balance (MFC)	\$ 719,794,412	Low Bid	\$197,855,482
Project Description	Widen from 4 to 6-lane divided roadway with a grade separation/overpass at SH 96	Next Lowest Bid	\$202,214,416
Current Condition	4-lane roadway with a center two-way left turn lane	# of Bids	5
Proposed Condition	6-lane divided roadway with a center raised median and a grade separation/overpass at SH 96	# of Bids within 10% of Low Bid	4
Current Annual Avg Daily Traffic	38,700		
Future Annual Avg Daily Traffic	61,700		

Transportation Commission Meeting May 25, 2023 25

TxDOT Houston District – CIP FORECAST

Varuna Singh, P.E.
Deputy District Engineer



HISTORIC TRANSPORTATION INVESTMENT IN TEXAS



\$147.9 billion, over the next 10 years

\$104.2 billion

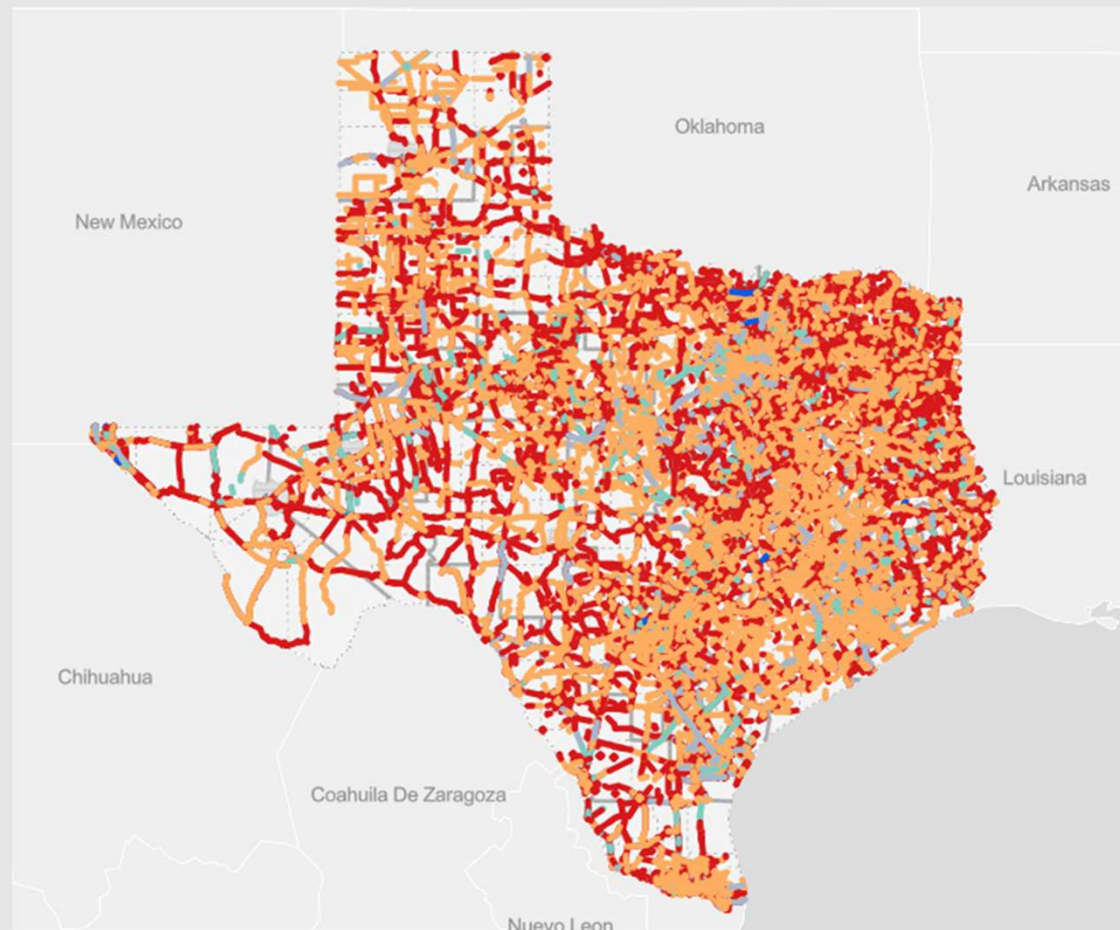
*Construction and capital maintenance for
7,000+ projects*

\$34.7 billion

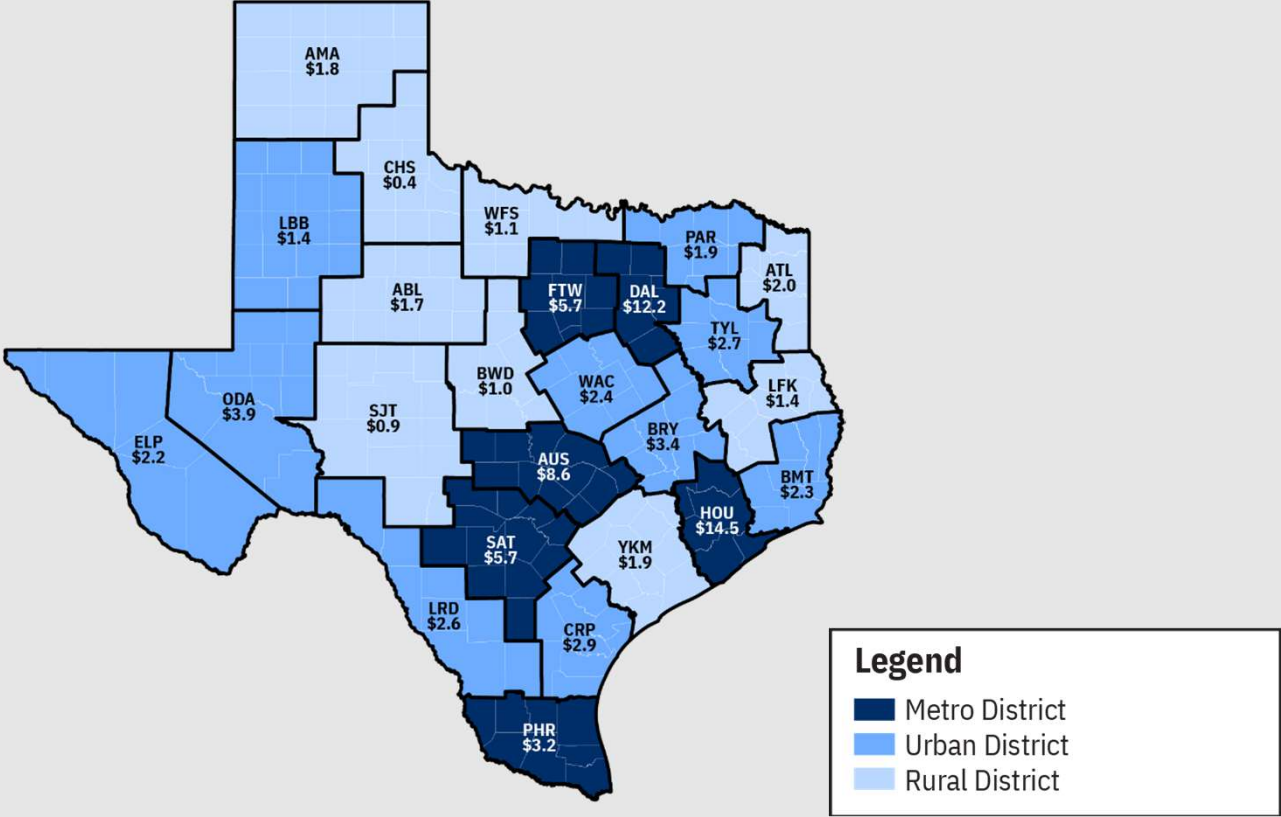
Authorizes and guides project development

\$9 billion

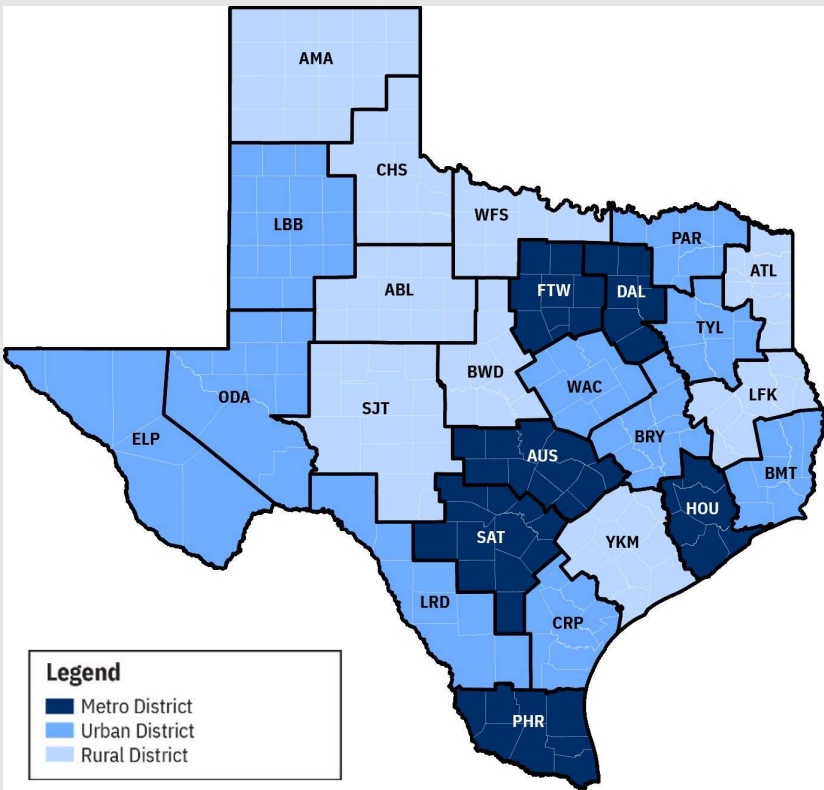
Routine maintenance contracts



2025 UTP FUNDING DISTRIBUTION



2025 UTP FUNDING DISTRIBUTION



District Type ^{1,2}	Distribution (\$B)	Distribution (%)	Pop. (M)	Pop. (%)	Area (Sq Miles)	Area (%)
Rural	\$12.2	11.7%	2.2	7.2%	100,591	37.8%
Urban	\$25.7	24.7%	5.9	19.5%	115,198	43.2%
Metro	\$49.9	47.9%	22.2	73.3%	50,702	19.0%
Statewide	\$9.8	9.4%				
Cat. 3	\$6.6	6.3%				
Total	\$104.2	100.0%	30.3	100.0%	266,491	100.0%

¹Rural, Urban and Metro are TxDOT District classifications and do not indicate actual rural vs. urban areas. Most districts combine a mixture of rural and urban areas

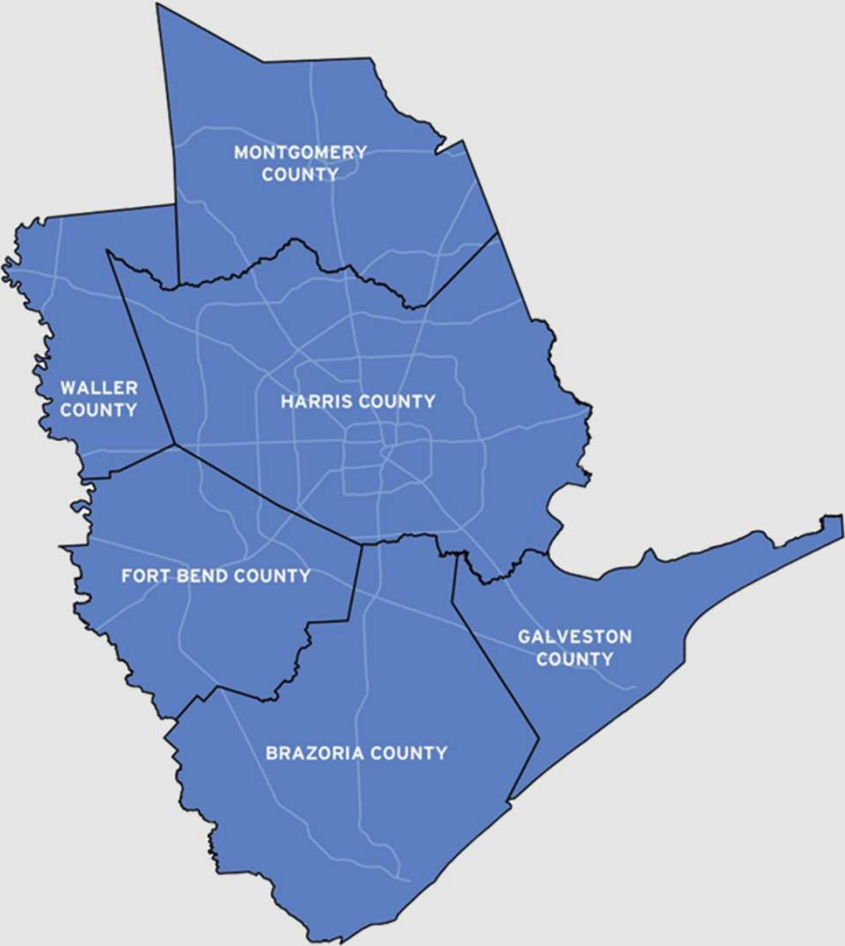
²District type based on updates to Texas Administrative Code for TxDOT District classifications



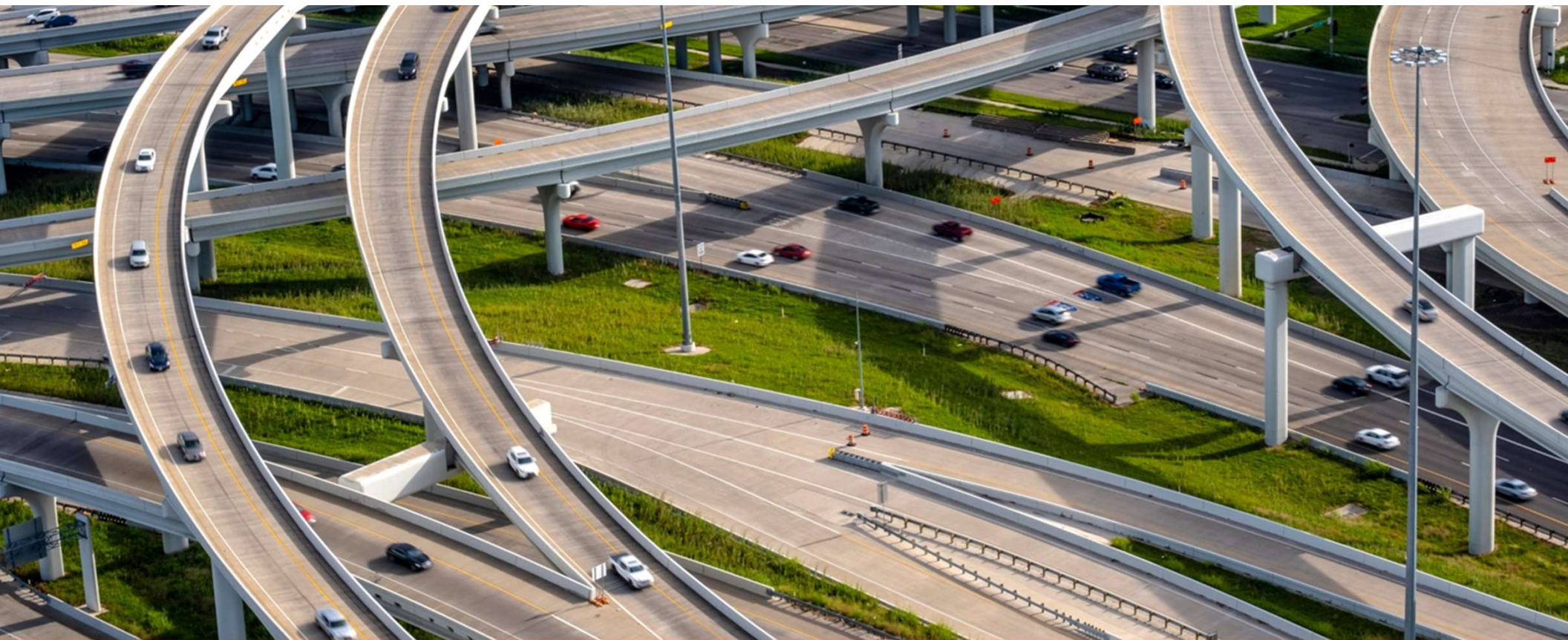
HOUSTON DISTRICT CONSTRUCTION FORECAST



HOUSTON DISTRICT CONSTRUCTION FORECAST



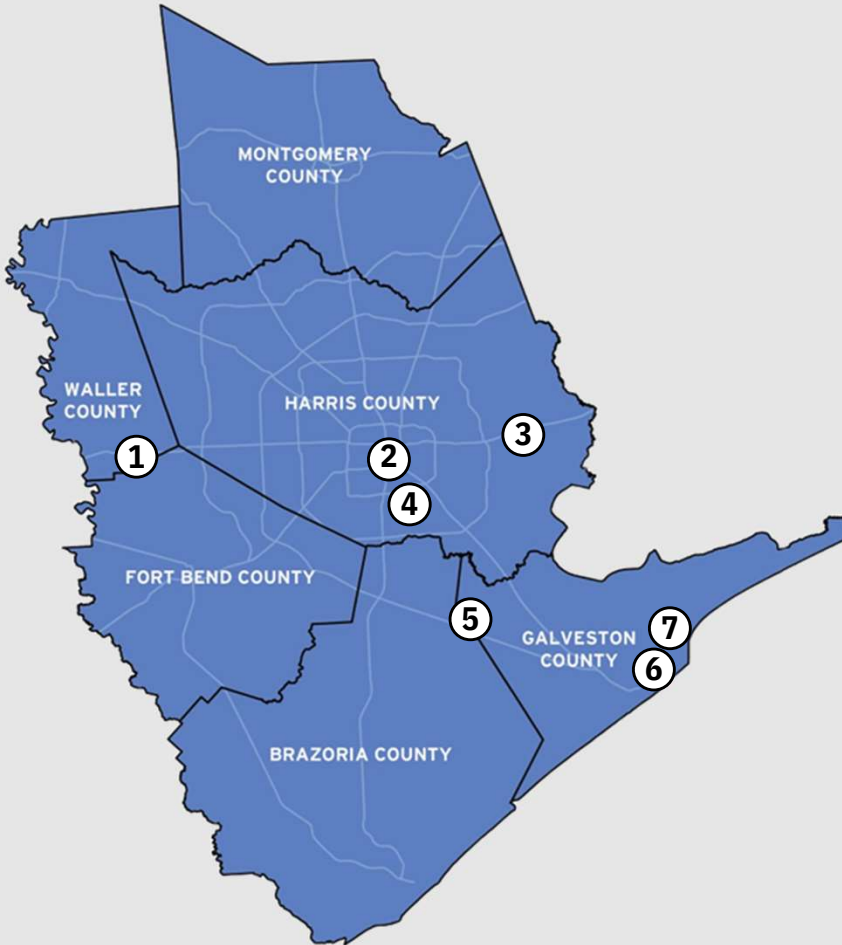
NEXT 4 FISCAL YEARS	
FY '25 (Sept 2024 thru Aug 2025)	\$ 1.367 billion
FY '26 (Sept 2025 thru Aug 2026)	\$ 1.727 billion
FY '27 (Sept 2026 thru Aug 2027)	\$ 3.146 billion
FY '28 (Sept 2027 thru Aug 2028)	\$ 3.096 billion
TOTAL	\$ 9.336 billion



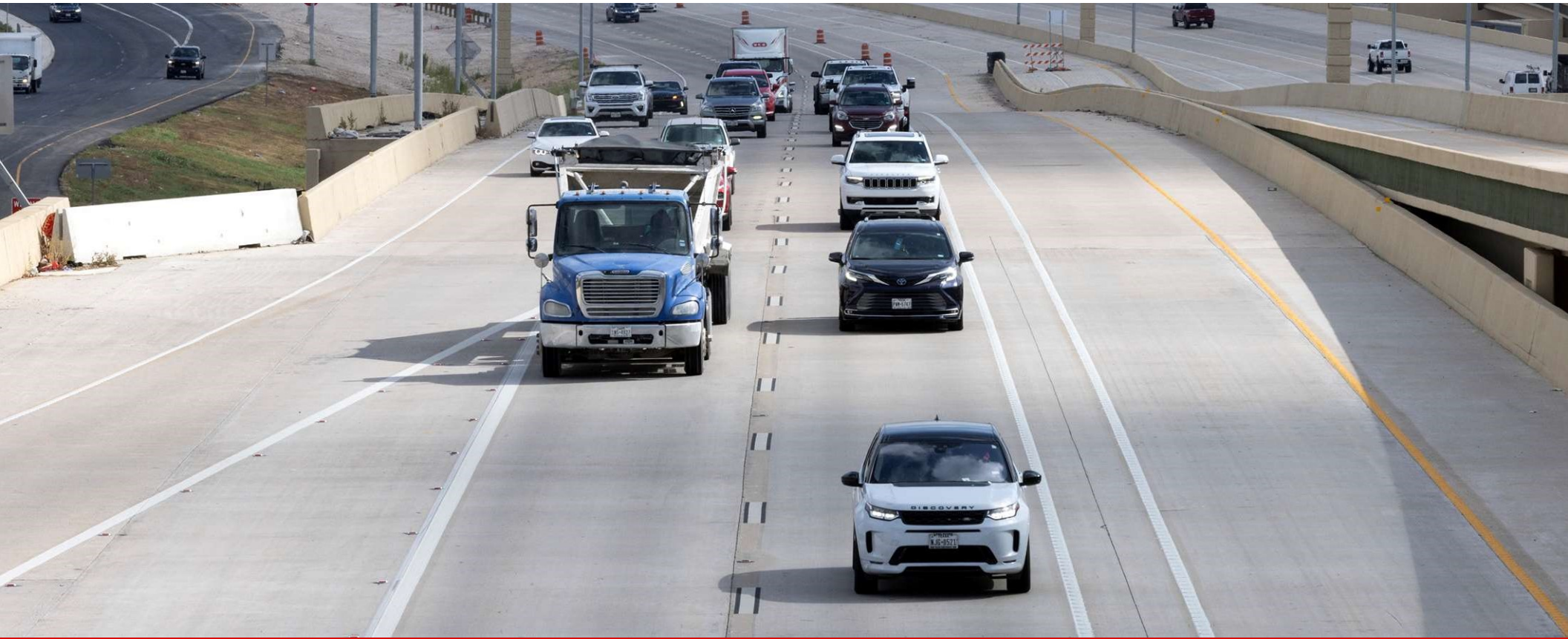
MAJOR PROJECTS IN DESIGN



MAJOR PROJECTS IN DESIGN



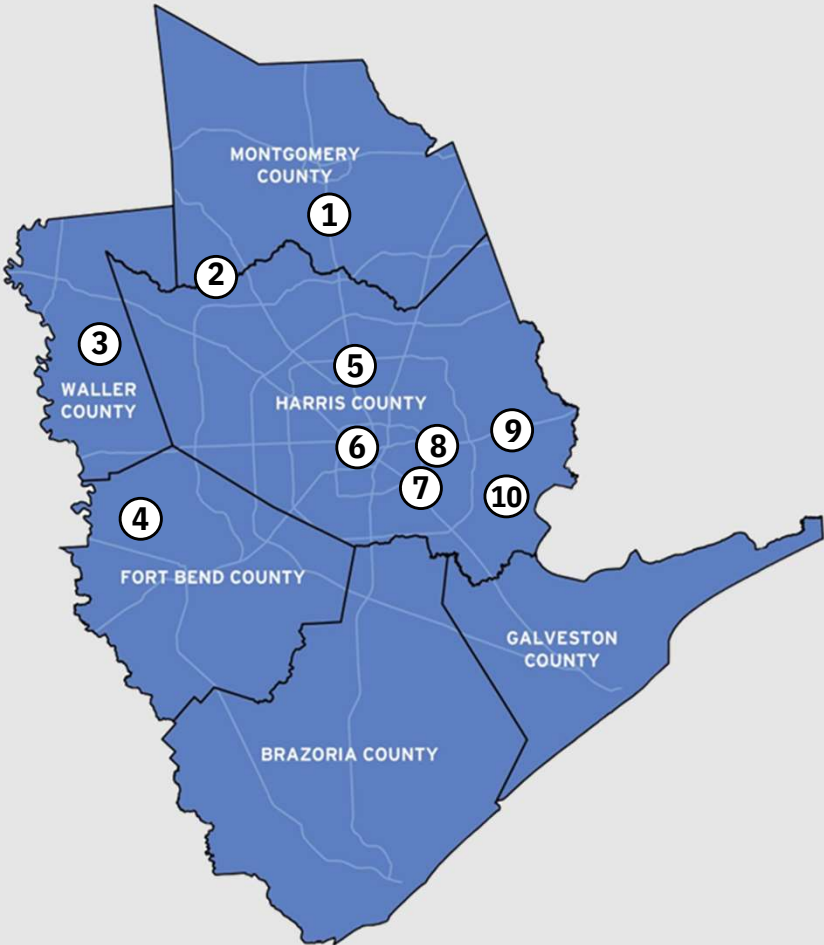
1. I-10 West, reconstruct and widen, west Harris County Line to FM 359 in Waller County
2. North Houston Highway Improvement Project, Segment 3: I-45, I-10 and I-69 surrounding Downtown Houston
3. I-10 East at San Jacinto River, reconstruct and widen bridge
4. SH 35, University Drive to Dixie Drive and at interchange with I-610 South
5. SH 99 Grand Parkway – Segment B-1, from I-45 South in League City to FM 2403 south of Alvin
6. I-45 South, reconstruct and widen, south of Causeway Bridge to 61ST Street on Galveston Island
7. Seawolf Parkway, Galveston Island to Pelican Island, reconstruct and widen bridge



MAJOR CORRIDORS IN PLANNING AND EARLY DEVELOPMENT



MAJOR CORRIDORS IN PLANNING AND EARLY DEVELOPMENT



1. I-45 North, from Beltway 8 North to South Loop 336 in Conroe, Planning & Environmental Linkage Study
2. FM 2920, reconstruct and widen, from SH 249 to US 290
3. SH 36A – North Segment, new location highway, from I-10 West to US 290, alignment to be identified
4. SH 36A – South Segment, new location highway, from FM 1994, south of Needville to I-10 West, alignment to be identified
5. North Houston Highway Improvement Project, Segments 1 & 2: I-45, from north of I-10 North to Beltway 8 North
6. I-10 Inner Katy, reconstruct and widen, from I-610 West to I-45 in Downtown Houston
7. I-45 South, from I-69 in Downtown Houston to Beltway 8 South, Planning & Environmental Linkage Study
8. I-610 East, from I-10 East to I-45 South, Planning & Environmental Linkage Study
9. I-10 East, from I-69 in Downtown Houston to SH 99 East, Planning & Environmental Linkage Study
10. SH 225, from I-610 East to SH 146, Planning & Environmental Linkage Study



Varuna Singh, P.E.
Deputy District Engineer
TxDOT Houston District

Varuna.Singh@txdot.gov

(713) 802-5011

THANK YOU

